



**Link-Belt**  
C R A N E S

**248** HYLAB  
HSL  
SERIES

**200 ton (181.4 mt) Lattice Boom Crawler Crane**

- Tier 4 final 270hp (201 kw) (high sulphur version available for export)
- Power up/power down matching front and rear drum's with free fall
- 26mm wire rope
- HSL-style operator's cab
- Audible & function kick-out range control
- On-Board Telematics system
- Rear view camera with color monitor
- Bullet-proof hydraulic pilot-operated controls
- 30 ton (27.2 mt) jib
- Upper guard rails
- Hook and pin side frames
- Modular counterweight design
- BIG capacities
- Luffer-ready



# 248 HYLAB HSL SERIES

200 ton | 181.4 mt Lattice Boom Crawler Crane

## Heavy-duty power for the most demanding jobs

- **Transport crane with 25 ft base section complete** with self assembly sheaves, less sideframes and counterweight at 88,305 lbs (40 055 kg)
- **11-piece counterweight system** design with state-of-the-art removal system
- **HSL rated capacity limiter** with color graphics
- **Power-up/down with auto brake**
- **Superior capacities**



Rope guards and polyamide sheaves

Self-assembly sheave in base section

Sealed bearings in mast and ball

Spring-loaded backstops

Foldable upper guardrails

Remote-control operated hydraulic counterweight removal cylinders

Telematics

Full contact 44" (1.12m) track shoes designed for maximum contact area minimizes ground bearing pressure

Counterweight "biscuit" design allows for various configuration options and easy transport

Audio visual swing alarm

Full-length catwalks and sideframe steps provide sure-footed access to the crane upper

Compact, high torque final drive with multi-speed travel

Hook and pin sideframes

Completely sealed lower, sealed (oil-filled) track rollers, and drive planetaries and compact hydrostatic drives add up to outstanding reliability and near-maintenance-free operation.

- Robust engine with **total horsepower control** provides unbeatable line speeds under load
- **Six pump** main hydraulic package provides smooth performance
- **Matched front & rear drum** performance with 46,924 lbs (21 285 kg) line pull
- **Multi-disk wet brakes** for smooth load control. Minimal no friction drag from planetary.
- **26 mm rope** on front and rear hoists with automatic pawl and grooved lagging
- **Free fall** for cycle-type work & pile driving
- **Dual swing drives** provide smooth swing control
- **High travel torque**

### Options include:

- **Third drum power-up/power-down** with auto-brake provides auxiliary 3rd line for conventional and luffer use.
- **Non free-fall** with foot travel pedals



Excellent access for all routine engine and hydraulic maintenance



# 248 HSL attachments are versatile and strong

## Conventional open throat boom

- 285 ft (86.87 m) conventional boom - 80" x 68" (2.03 x 1.73 m) in-line pin-connected tube boom attachment and open throat top section
- Bar pendants stow with boom connecting pins on each extension for ease of transport.
- Main chord members are made with 100,000 psi yield material with high strength lattice.
- 16-part boom hoist reeving.
- Standard equipment wear blocks protect lattice sections from wire rope scuffing.

## Auxiliary 5 ft (1.5 m) tip extension

- Optional — designed to provide clearance between two working hoist lines

## Fixed jib

- 30 ft fixed jib (9.14m)
- 30 ft to 100 ft (9.14 - 30.48m)
- Offset angles at 5°, 15° and 25°

## Boom and jib — open throat

- 245 ft + 100 ft (74.68 + 30.48 m) tube boom + fixed jib
- 347 ft (105.76 m) maximum tip height

## Luffing attachment

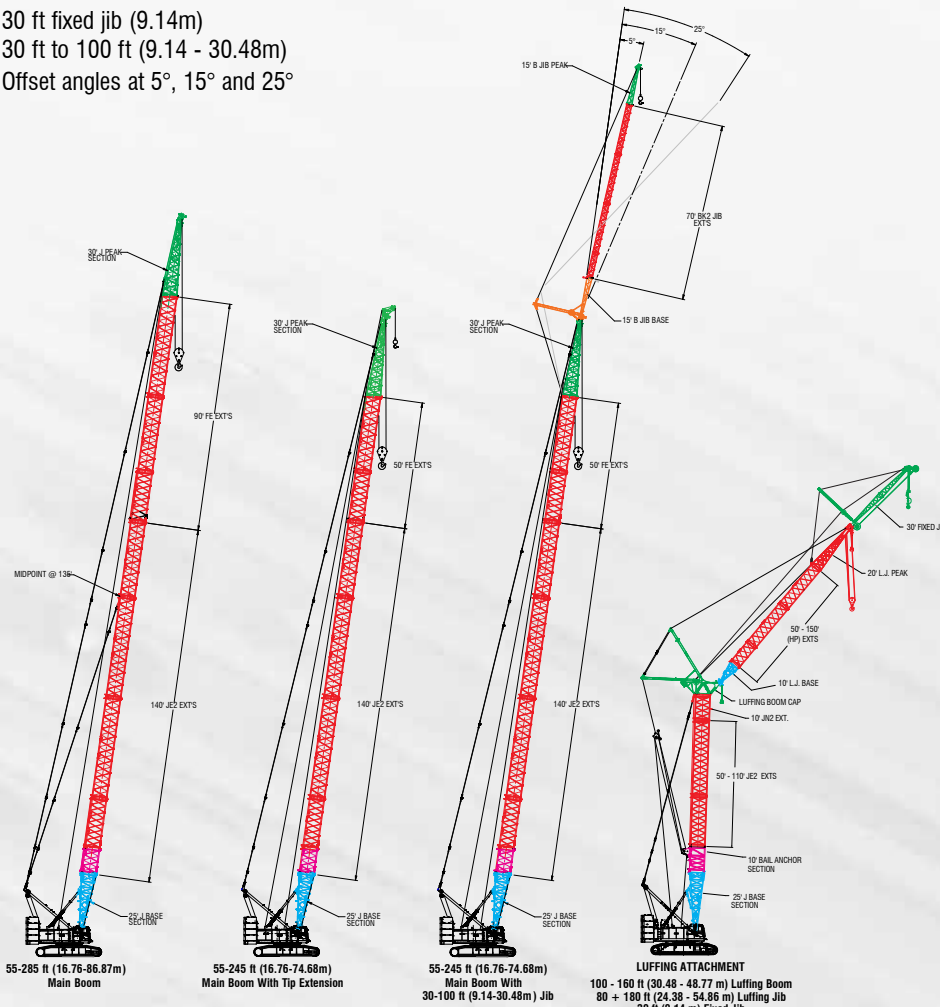
- 47.2 ton (43.1 mt) capacity, 335 ft (102.11 m) luffing attachment with 360° capacities, utilizing conventional boom for luffing boom
- 100 ft to 160 ft (30.48 m to 48.77 m) luffing boom
- 80 ft to 180 ft (24.38 m to 54.86 m) luffing jib
- Maximum combination: 150 ft + 180 ft + 30ft (45.72 m + 54.86 m + 9.14 m)

All boom sections are manufactured in Lexington, Kentucky for fast, accessible, easy service, parts and replacement.



The boom top section features polyamide sheaves and standard pin-on points for attachment of options such as a fixed jib, tip extension and adapters for universal pile driving leads with quick reeve ability.

In-line boom suspension load cell, standard with anti-two block system for both front and rear drum.



In-line boom suspension load cell



Double-tapered boom pin with pin catcher





Operator's cab provides ergonomic comfort and control



HSL capacity limiter with high visibility color graphic display

## Telematics. You own the data!

Cellular-based data logging and monitoring system that provides:

- Viewing options for sharing data with distributor and Link-Belt
- Location and operational settings
- Monitor routine maintenance intervals
- Crane and engine monitoring
- Diagnostic and fault codes



## Highly functional and comfort cab

The spacious HYLAB cab is ergonomically designed for maximum visibility, operating comfort and control with these standard features:

- Wide, **uncluttered entry**
- Six-way **adjustable seat**
- Easy-to-read **backlit gauges**
- **15,880 BTU air conditioning** and **18,750 BTU heating** run through upper and lower vents
- Full functional **rated capacity limiter** monitored by **load sensing** via boom hoist mounted load cell
- **Adjustable armrest console** with pilot-operated single-axis controls
- **Hydraulic pilot controls** for variable hoist, swing and travel performance
- **Travel levers** conveniently located on right hand console

Operator's cab console features include:

- Complete **engine monitoring**
- **Rear view monitoring**
- **Free-fall mode** indicator
- Anti-two block and boom hoist **override switches**
- **Limit alarm indicator light**
- **System override switch** and indicator light
- **Front, rear and third drum lock switch**
- **Eco-winch feature offers maximum line speed** at idle with lighter load



• Full length fold up catwalks on both sides of the upper house

• Left and right side access points offer maximum accessibility

## Outstanding machine access





## Transports with 25' base section & self assembly — start lifting immediately!

- Transports with 25' base (7.6 m) section
- 15,000 lb (6 804 kg) biscuit-style counterweight maximizes transportability
- Simple counterweight removal system lowers counterweights all the way to the ground
- Carbody jacks are plumbed live — no need to disconnect
- Three-legged lift sling handles counterweight and crawlers
- 248 HSL moves in 11 loads with full boom, jib and counterweight
- Completely self-assembles and disassembles (no helper crane required)

### TRANSPORT WEIGHTS

Main transport load:	88,305 lbs (40 055 kg)
"A" counterweight	20,000 lbs (9 072 kg)
Cheek weights	8 @ 15,000 lbs (6 804 kg)
Carbody weight	2 @ 17,650 lbs (8 006 kg)
Total counterweights	173,140 lbs (78 535 kg)
Sideframes	2 @ 41,400 lbs (18 072 kg)





Link-Belt Construction Equipment Company is a leader in the design, manufacture and sales of telescopic and lattice boom cranes with headquarters and manufacturing facilities in Lexington, Kentucky, USA. Link-Belt is committed to the manufacture and service of high quality products that satisfy customers worldwide

Link-Belt is also home to a family of passionate professionals with a legacy of innovation and cutting-edge technology spanning over 140 years. These professionals, in a 770,822 sq. ft. (71 612 m<sup>2</sup>) manufacturing facility and with a culture of continuous innovation, have pushed Link-Belt to be the most modern crane manufacturer in North America.

**Your crane investment is always protected... with your Link-Belt distributor.**

When you invest in a Link-Belt crane, you invest in a legacy of outstanding customer support dating back to 1874.

The ultimate value of a machine begins with state-of-the-art design and quality manufacturing, but it is the excellent Link-Belt distributor product support that determines its long term value. This philosophy has earned Link-Belt cranes the enviable position of traditionally commanding some of the highest resale prices in the industry.

"... to be recognized as a **leader** in **customer service & satisfaction.**"  
— The Link-Belt Vision

**Link-Belt Preferred**

**As a member of Link-Belt Cranes user's group, you will have access to:**

- A comprehensive online library of parts, service & operator manuals for YOUR crane
- Interactive, live groundbearing calculations for YOUR crane
- Online access to recommended spare parts lists, filter, lube and key lists plus maintenance information and more
- No annual fee or charges to access your crane information
- Factory-trained distributor support
- Experienced factory technicians
- 24/7 parts distribution with 95% availability
- Factory parts customer service reps
- Link-Belt certified structural repair
- Boom inspection
- 3D lift planning
- Plus a vast array of information on new products, services and special offerings

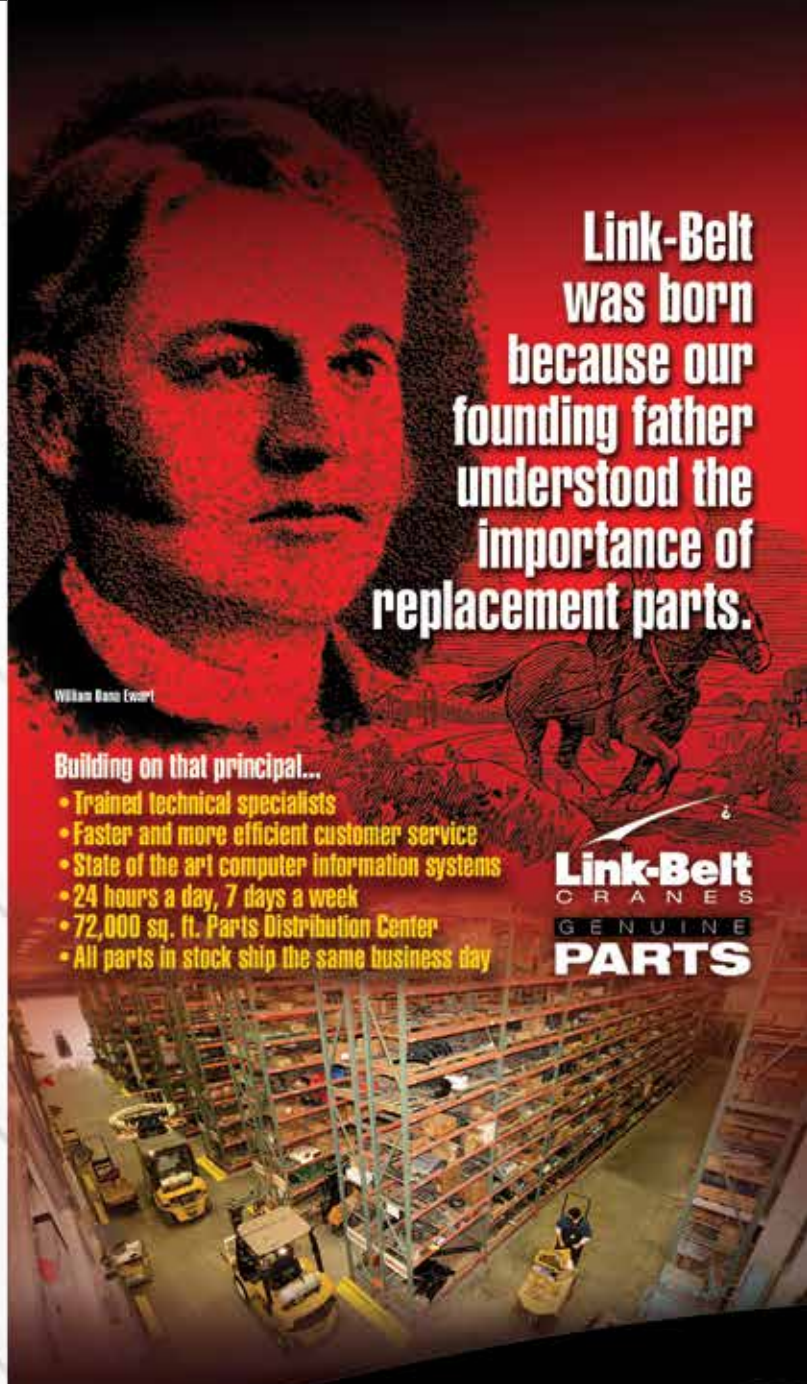
**Online 3D LIFT PLANNING**

- Web-based, active 3D, high graphic
- User-friendly, no CAD program required
- Always current, no updates required
- Print actual lift



**Online GROUND BEARING PRESSURES**

- Dynamic specific machine model position loadings
- Graphically illustrated in 360° numerical presentation
- Print out



**Link-Belt was born because our founding father understood the importance of replacement parts.**

**Building on that principal...**

- Trained technical specialists
- Faster and more efficient customer service
- State of the art computer information systems
- 24 hours a day, 7 days a week
- 72,000 sq. ft. Parts Distribution Center
- All parts in stock ship the same business day

**Link-Belt CRANES GENUINE PARTS**

**Link-Belt CRANES**  
Lexington, Kentucky | [www.linkbelt.com](http://www.linkbelt.com)

©Link-Belt is a registered trademark. Copyright 2019 All rights reserved. We reserve the right to change designs and specifications at any time. Litho in U.S.A. 1/19 3050 #4555 (supersedes #4536)